

STANDARD DEPARTURE  
CHART - INSTRUMENT  
(SID) - ICAO

TRANSITION ALTITUDE  
10000 FT

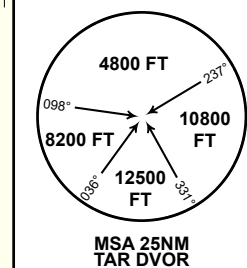
TARAZ TOWER 122.1  
TARAZ ATIS (EN) 118.5  
TARAZ ATIS (RU) 127.4

NASIP 2M, GERPU 2M,  
DODOL 2M

TARAZ  
RWY 31

DIST IN NM  
ALT, ELEV IN FT  
BRG ARE MAG  
VAR 6°E

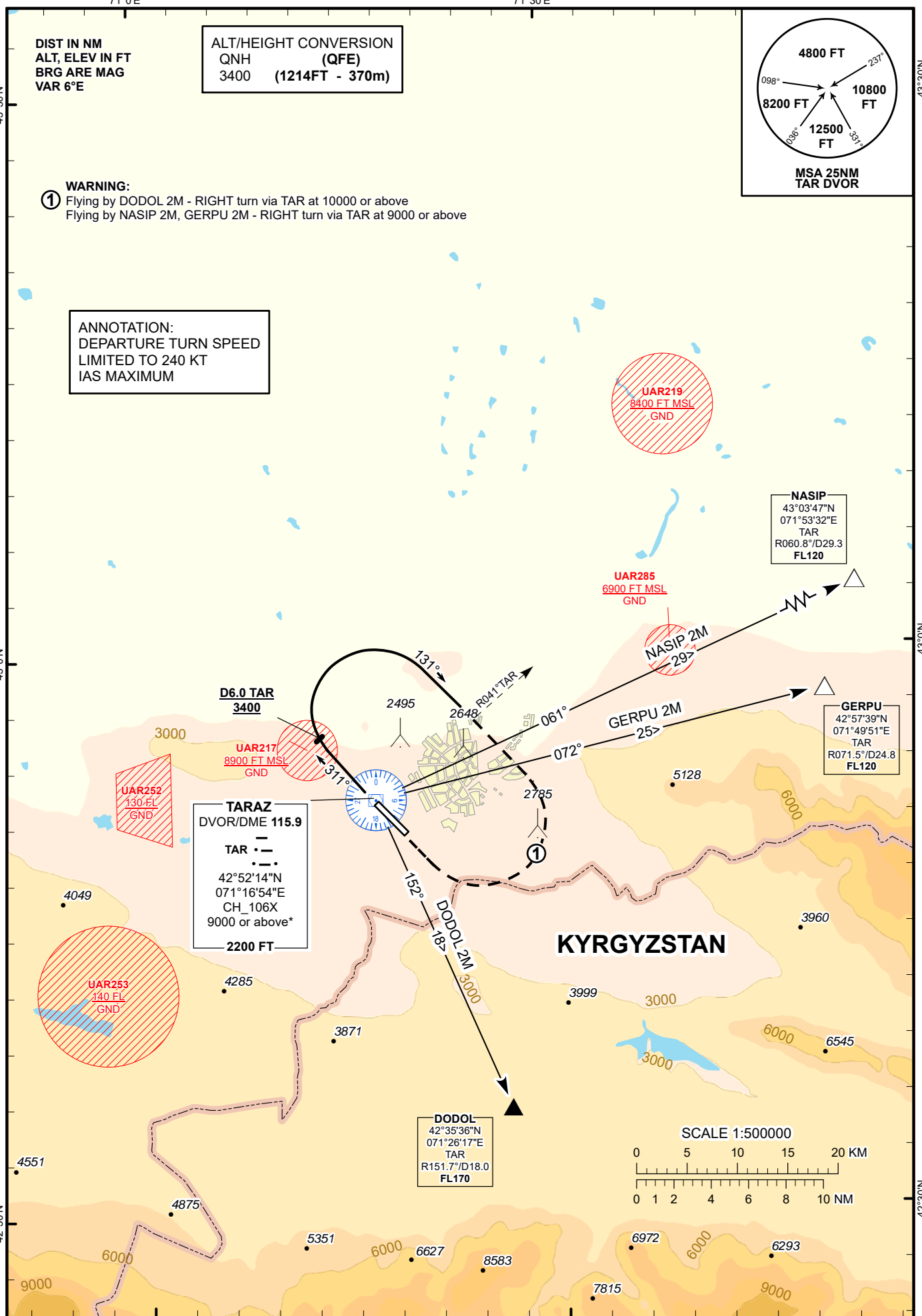
ALT/HEIGHT CONVERSION  
QNH (QFE)  
3400 (1214FT - 370m)



- WARNING:**
- 1 Flying by DODOL 2M - RIGHT turn via TAR at 10000 or above  
Flying by NASIP 2M, GERPU 2M - RIGHT turn via TAR at 9000 or above

ANNOTATION:  
DEPARTURE TURN SPEED  
LIMITED TO 240 KT  
IAS MAXIMUM

CHANGE: Add ATIS, editorial.



<b>STANDARD DEPARTURE ROUTES – INSTRUMENT (SID) TARAZ RWY 31</b>
<b>NASIP 2M</b> After take-off climb on track 311° to 3400 FT or above. At 6.0 NM TAR, turn RIGHT on track 131° until intercept R041° TAR, after intercept R041° TAR turn RIGHT to TAR climbing to 9000 FT or above(*), then proceed on track 061° to NASIP (R060.8° D29.3 NM TAR). Cross NASIP at FL120 or above. <b>*Remark:</b> If unable to reach 9000 FT until TAR, continue to reach 9000 FT over TAR.
<b>GERPU 2M</b> After take-off climb on track 311° to 3400 FT or above. At 6.0 NM TAR, turn RIGHT on track 131° until intercept R041° TAR, after intercept R041° TAR turn RIGHT to TAR climbing to 9000 FT or above(*), then proceed on track 072° to GERPU (R071.5° D24.8 NM TAR). Cross GERPU at FL120 or above. <b>*Remark:</b> If unable to reach 9000 FT until TAR, continue to reach 9000 FT over TAR.
<b>DODOL 2M</b> After take-off climb on track 311° to 3400 FT or above. At 6.0 NM TAR, turn RIGHT on track 131° until intercept R041° TAR, after intercept R041° TAR turn RIGHT to TAR climbing to 10000 FT or above(*), then proceed on track 152° to DODOL (R151.7° D18.0 NM TAR). Cross DODOL at FL170 or above. <b>*Remark:</b> If unable to reach 10000 FT until TAR, continue to reach 10000 FT over TAR.